

Fish Pass at Low Mill Addingham

Donna Easter
Engagement Officer

Richard Maxted
Monitoring Manager

Who we are and what we do

- **Create better places for people and wildlife**
- **Improve water quality**
- **Develop fisheries**
- **Work to improve conservation and ecology**
- **Manage flood risk from main rivers**



Introduction

- Why we need to act
- What must we take into consideration
- What next



WFD



Considerations

- Landowner agreement
- Community & legal
- Maintaining an accurate flow gauge
- The range of flow in the river Wharfe
- Physical limitations of the site
- Species design needs
- Money

Location





THE DON CATCHMENT RIVERS TRUST



Aire Rivers Trust

River Wharfe level at Addingham

[Map](#) [Upstream](#) [Downstream](#) [Nearby levels](#)

Latest at 1:30pm on 15 July ⓘ

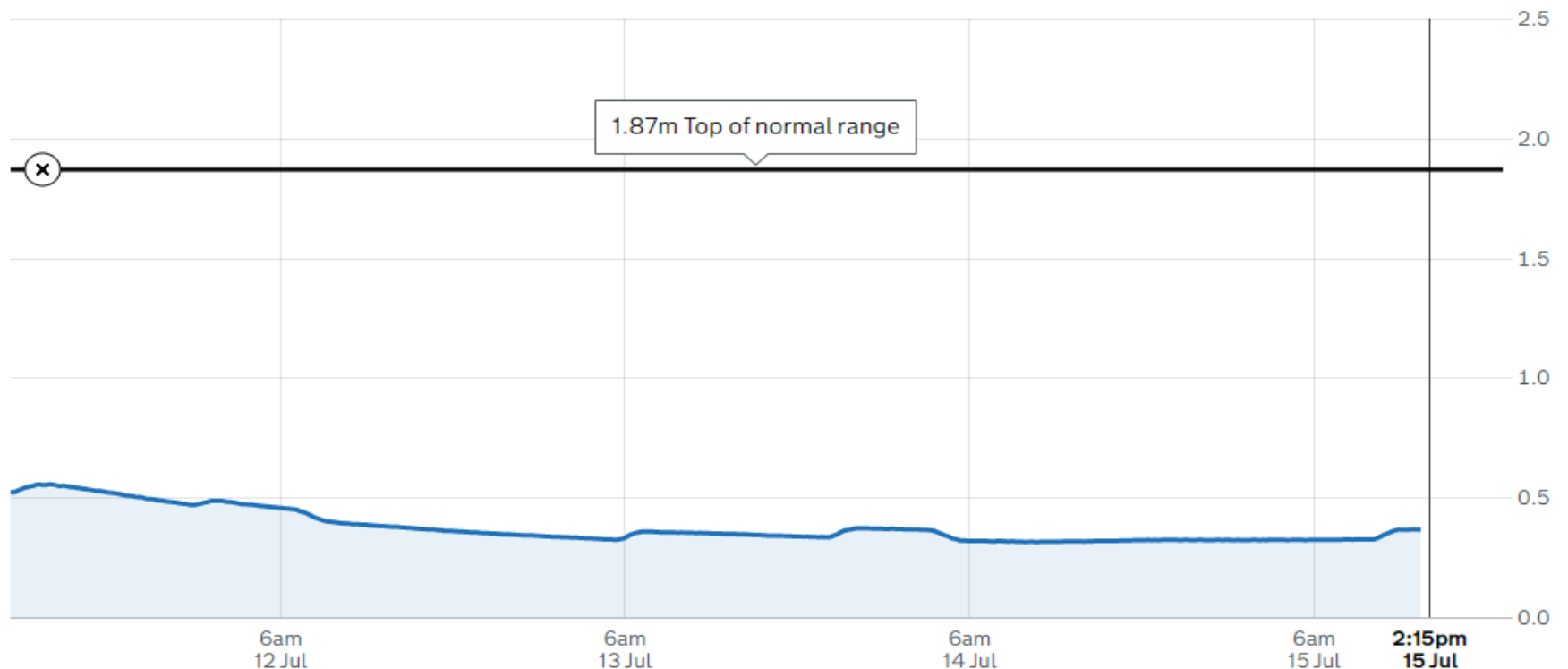
Height
0.36m ⓘ

Trend
Steady ⓘ

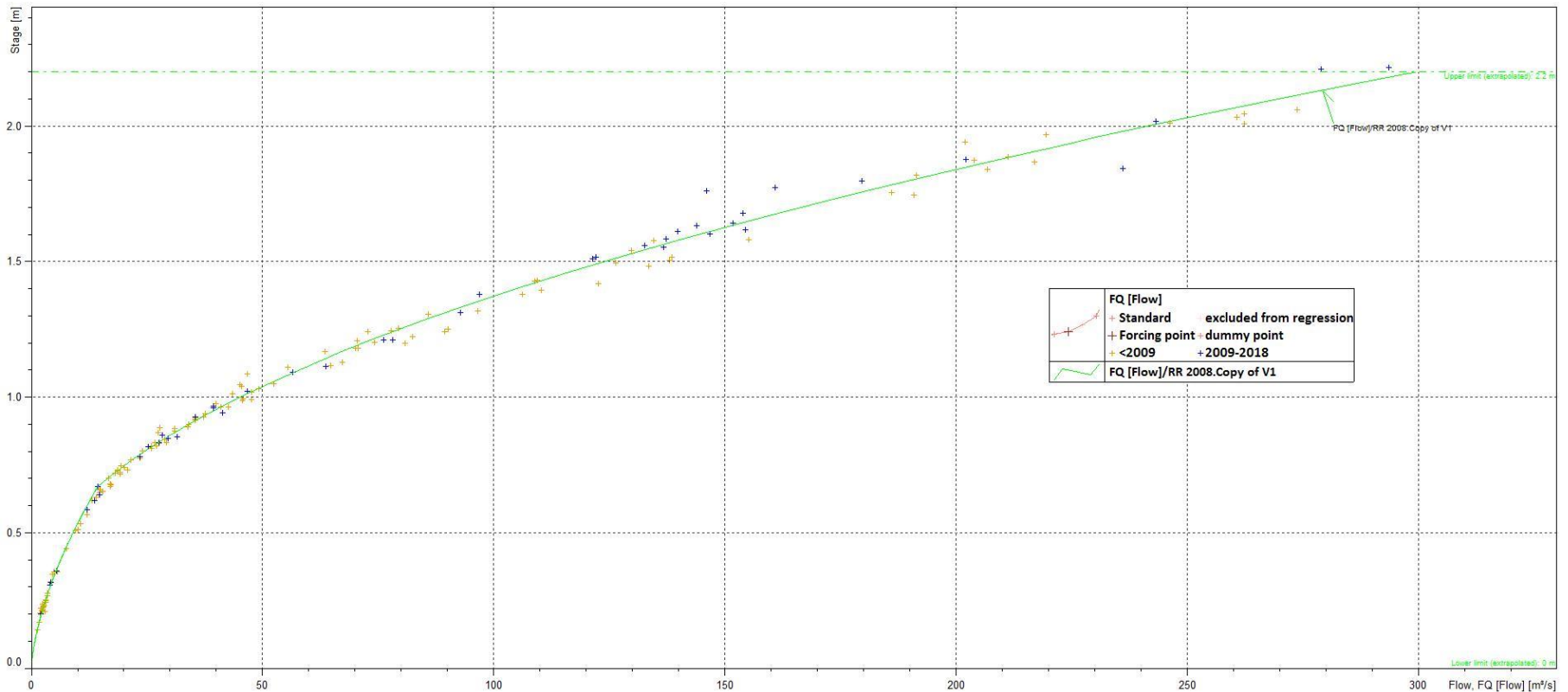
State
Normal ⓘ

Normal range 0.19m to 1.87m

Height in metres over the last 5 days



A Scientific Instrument



River flows accurate from near zero to 300 cubic metres (66,000 gallons) per second

The need for this data



The flow regime

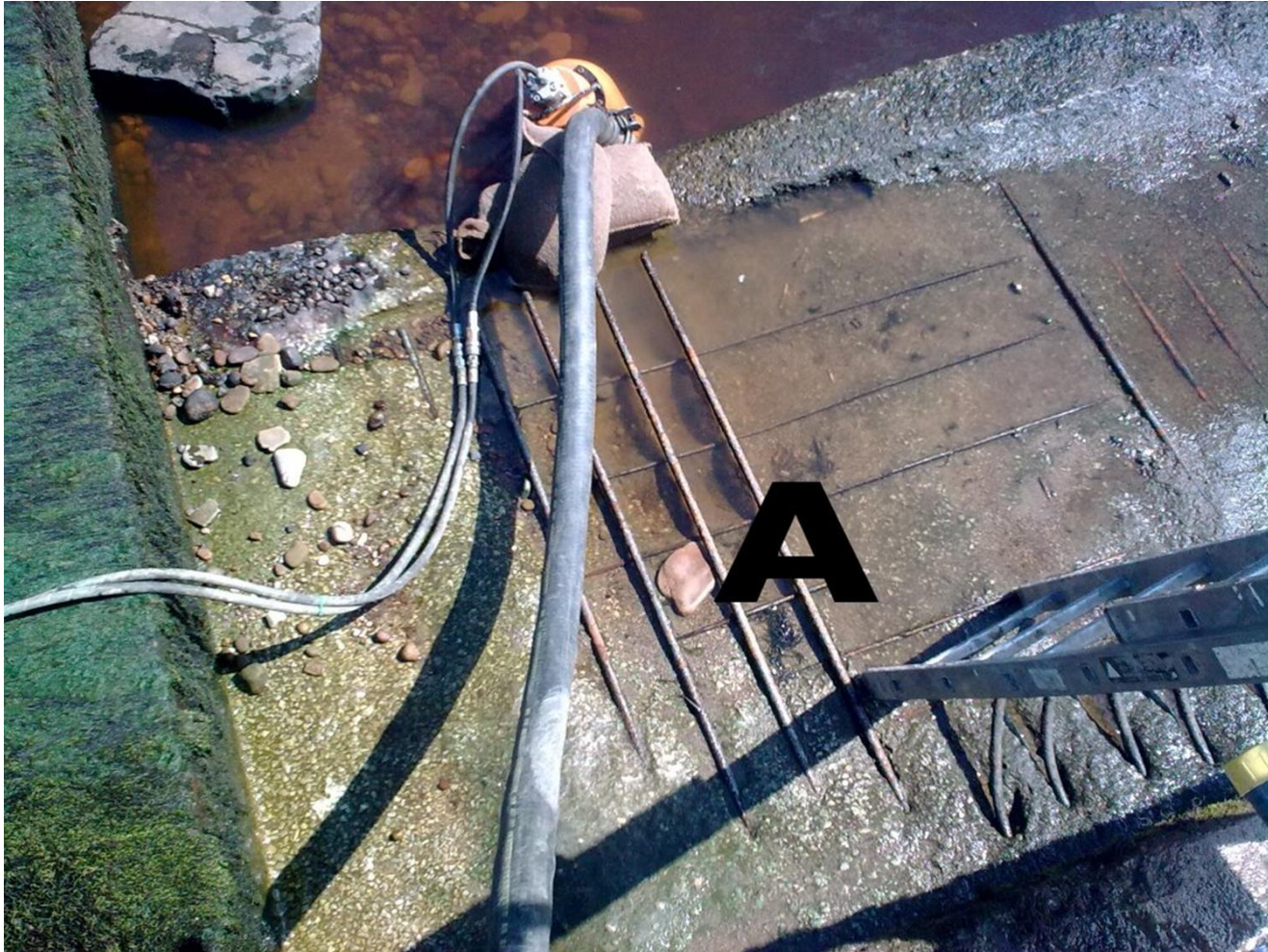
Highest flow recorded was in November 2000.

446 cubic metres / second

Enough water to fill 22 petrol tankers every second.

It's been above 300 m³/sec on over 30 occasions since 1973.

The flow regime



Species needs



Location and attraction



Construction cost and complexity



What next

- Previous plans need to be reviewed
- New options using current knowledge
- Consult and share
- Obtain relevant financial approvals and funds
- Quotes and contracts



**Options being
developed**

**When feasible
we will share
our plans**

Keep in touch

addinghampass@environment-agency.gov.uk